



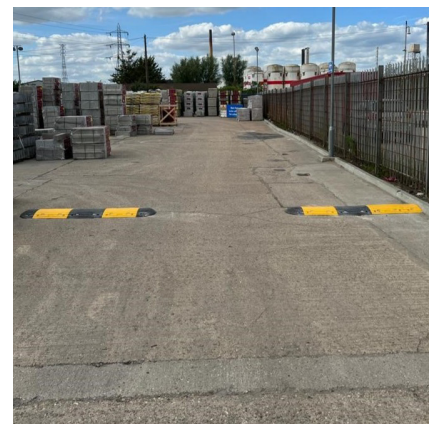
Speed Ramp 50mm Black and Yellow



The AUTOPA Speed Ramp 50 is designed to slow traffic to approximately 10mph, and the

Manufactured from recycled plastic, solid black or painted high visibility yellow. This speed ramp is suitable for wide variety of vehicle types, including heavy goods vehicles with pneumatic tyres up to 40 tonnes. The combination of high contrast black and yellow sections with high visibility reflectors guarantee that the ramp can be seen in even the worst conditions.

The AUTOPA Speed Ramps are fully modular and created from a variety of sections, each are sold separately allowing for any length of speed ramp. All shoulders and inners are available in black or yellow and the chart below will determine the correct number of each required for your site.



<u>Part Number</u>	<u>Description</u>	<u>Weight</u>
138 106 415	Speed Ramp 50, Shoulder Section, Yellow	3kg
138 106 418	Speed Ramp 50, Shoulder Section, Black	3kg
138 106 420	Speed Ramp 50, Inner Section, Yellow	8kg
138 106 425	Speed Ramp 50, Inner Section, Black	8kg

Ramp Length	2.0m	2.5m	3.0m	3.5m	4.0m	4.5m	5.0m	5.5m	6.0m	6.5m	7.0m
Shoulders	2	2	2	2	2	2	2	2	2	2	2
Inners	3	4	5	6	7	8	9	10	11	12	13

Product details

- Speed ramp 50 - 50mm above ground
- Designed to slow traffic down to approx. 10mph
- Complete with bolts and reflectors
- 400mm width
- Inner section - 500mm length
- Shoulder Section - 240mm length

Installation & use

Speed Ramps require bolting to a suitable concrete surface (no less than 100mm thick).

Due to variable vehicle specifications some 'grounding' may occasionally occur.

In order to minimise 'grounding' ensure the area surrounding the ramps is flat and level with no nearby surface irregularities or gradient changes.

This product is guaranteed for 12 months (if installed and used correctly).



www.autopa.co.uk
+44 (0)1788 550556

AUTOPA Limited
Cottage Leap, Rugby, Warwickshire CV21 3XP

